

2 0 1 2

E P I P H A N Y

# the LIGHT *Fantastic*

A SEASON TO SEE WHAT THE LIGHT WILL REVEAL TO US.



## For Your Calendar

*Some new year dates to put into your calendar. Before it ends.*

Film Nights begin [Jan 19](#), screening 'Romero'

Social Justice exploration [Jan 26](#)

Communion on [Feb 5](#)

Winter Taize Service - [Feb 12](#)

Pancake Tuesday & Bingo Night - [Feb 21](#)

Lunch & AGM - [February 26](#)

## This Sunday, January 15

**Doug preaching : 'Making the Team' ([see the readings](#))**

*Note - there will be a brief meeting of the congregation following worship, to vote on the Board recommendation to call Karen Bowles to the position of Pastoral Care Minister upon her ordination this spring.*

**Miss last Sunday? Hear Kristin's excellent [sermon on the baptism of Jesus and the moral economy](#). [Click for recorded prayers](#)**

### Epiphanies come all the time.

Wise men follow a star. The penny drops, the light goes on, something clicks over in our hearts and we understand the world in a new way. This can be annoying, as we crave continuity, and epiphanies generally do not let us stay the same, or at least not comfortably. We can pretend, at least for a while, that everything is as it was. But the heart knows.

In our customary odd language, this season we are entering is awkwardly called the 'After Epiphany' Sundays, and will end

when we enter Lent later in February. But there is no limited season for understanding. It is simply always time to be aware, awake, taking in how it is in the world, how it is for the people around us, and expecting that if we keep them open our eyes will find some light, and if we keep them open our hearts will grow into new ways.

*Keep the faith,*

*Doug*

### Among our people :

Our condolences this week to the families of Donna Rutherford, and Peggy Crockett.

Our congratulations to new grandparents Caroline & Bob Duncanson, with baby boy Logan born to Zander and Emily!

### Local Heroes

The many donors, of amounts large and small, who make possible our **Good Samaritan Fund** - a confidential discretionary fund available to the ministers to assist any who need immediate concrete help with food, travel, rent, medical, etc. Thank you for reaching out to the neighbours!

# Learn - Grow - Serve

## Social Justice Advocacy

*"Is this not the worship that I choose? To loose the bonds of injustice, to untie the chains, to let the oppressed go free, and to break every yoke? Is it not to share your bread with the hungry, and bring the homeless poor into your house? Then, light shall break forth like the dawn and your healing shall spring up quickly."  
(Isaiah 58)*

Please join us on **Thursday, January 26, 2012 at 7:00 p.m.** in Clark Hall for a facilitated discussion about Rosedale United Church's new *social justice advocacy initiative*.

As a first step to developing a group committed to social justice advocacy within the congregation, the meeting will focus on a number of important questions including:

- What is social justice?
- What is the theological rationale for RUC's involvement in social justice advocacy?

- What is the relationship between social justice advocacy and our existing compassionate response programs?
- How can RUC intelligently and compassionately engage in effective social justice initiatives?

Everyone is welcome and we look forward to your participation. Please contact Jennifer Wootton Regan at [jwoottonregan@rogers.com](mailto:jwoottonregan@rogers.com) or 416-929-1826 if you wish to receive discussion materials in advance of the meeting or if you have any questions.

*\* In connection with this, you may want to come out to the Film Night the week prior, to see 'Romero'.*

## ECUMENICAL NEWS

*This new feature will be included regularly - news items concerning the activities, ministries, and controversies facing the churches in the world.*

### Church of Norway to improve inclusion of native Sami people

Oslo, Norway (ENInews)--The (Lutheran) Church of Norway in the next five years will be implementing a plan to enhance the role of the indigenous Sami people in church life. "We want Sami church life to be an equal and natural part of the church, and the Church of Norway to be a multicultural fellowship," said Jens-Petter Johnsen, director general of the Church of Norway National Council. He spoke with the Church of Norway Information Service. The Sami are an indigenous people in the northern parts of Norway, Sweden and Finland, and on the Kola Peninsula in Russia.

This summary may be copied or re-posted provided the information printed below is retained. Individual paragraphs may be reproduced provided ENI is acknowledged as the source.

# Let's Have Some Fun With Hymns!!

A few years ago this weekly news email began as a short note each week in the winter to a couple dozen families who were often away skiing. It was called *'The Lift Ticket'*, and each week there was a photo related to skiing. It has morphed quite a bit, of course, and now goes out to almost every household in the church, through most of the year.

I came across the old folder of skiing pictures recently, and thought we could have some fun with them.

Here's the gig : There are nine photos below, numbered. If you have a spare moment, I'm looking for creative match-ups between photos and hymn titles.

I'll put a number by each photo - you send me your best pairings. I'll publish the results !

(To help you - [here is a link](#) to an online 'title index' for *Voices United, our hymnbook.*)



1

For example, how about :

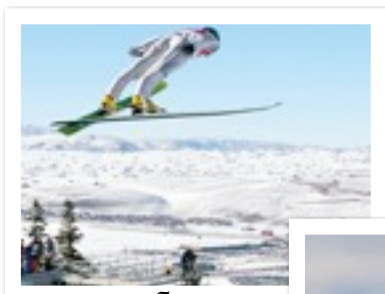
*'How Great Thou Art!'* (L)

or

*'Lo, He Comes, With Clouds, Descending'?* (R)



2



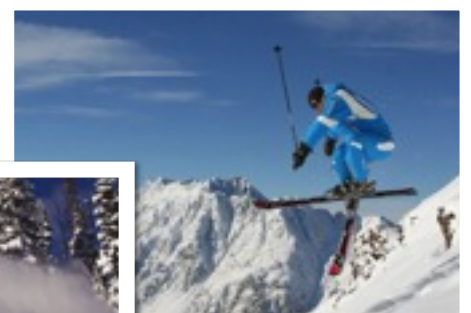
3



5



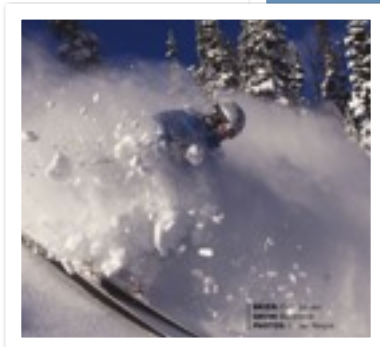
7



9



6



8



Watch here for more news and  
information - and please send me any  
items you want posted, photos, links,  
and so on...

DN